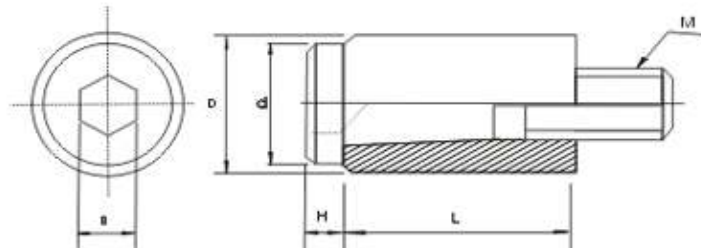


INDIAN TECHNO ACCESSORIES CO.

Mould Bases & Die Sets Accessories.

Email : sales@itac.in, itac2008@yahoo.com



M 材質: ① SCM435
② 樹脂

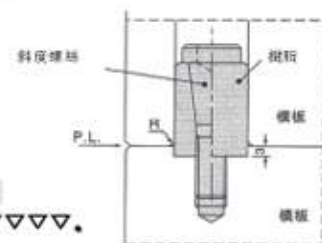
《樹脂閉閉器》特性說明:

- 1、由斜度螺絲調整模板與樹脂間之摩擦力，約轉1/4圈可合閉模約5萬次。
- 2、模具裝置拆卸容易、簡單，價格低。
- 3、此裝置也可用在小水口板與打中板或二段頂出小水口或滑座之工件上。
- 4、模具重量100K以下用12Φ-4個，500Kg以下用16Φ4個，1000Kg以下用20Φ-4個，若超過1000Kg以上，則增加為6個以上。
- 5、分：白、黃、橘、藍四種，藍色可耐高溫160°C。

安裝方法:

- 1、樹脂埋入公模板約3厘米，母模之孔以H7之絞刀加工至+0.1mm範圍內，內面加工至▽▽▽~▽▽▽▽。
- 2、母模面請加工成R狀。如做C面之倒角，耐久性較差。
- 3、請勿在樹脂上加油，因為加油會使摩擦力減低。

安裝方法



Features:

- 1、Use sloping screw to adjust mold plate and parting locks, then turn 90 degrees. Parting locks can be closed up to 50,000 times.
- 2、Easy to assemble and disassemble, and cost efficient.
- 3、Can also be installed into small, medium size, and 2-sectional injecting metal pipes, or can be installed on sliding bases.
- 4、Mold weight< 100kg, using 4pcs of 12Φ.
Mold weight< 500kg, using 4pcs of 16Φ.
Mold weight< 1000kg, using 4pcs of 20Φ.
Mold weight> 1000kg, using 6pcs.
- 5、Colour: white. Yellow. Orange. Blue.

Installation:

- 1、Insert Parting Locks into die mold about 3mm, then using H7 reamer to process mold hole within +0.1mm range.
- 2、Process mold surface to the shape of letter R. If processing to the chamfering of letter C, it will shorten its life cycle.
- 3、Do not add any oil on parting locks, doing so will reduce the friction.

尺寸表單位: (mm)
Specifications unit: (mm)

Type No.	ΦD	Φd	H	L	M	B	COLOR				單價
							白 White	黃 Yellow	橘 Orange	藍 Blue	
PO	10	8.5	3	18	M5	4	—	✓	✓	—	
	12	11	3.5	20	M6	5	✓	✓	✓	✓	
	13	11	3.5	20	M6	5	✓	✓	✓	✓	
	16	14	4	25	M8	6	✓	✓	✓	✓	
	20	16	5	30	M10	8	✓	✓	✓	✓	
	20	14	4	25	M8	6	✓	—	—	—	
	25	16	5	30	M10	8	✓	—	—	—	

註: ✓表示有庫存

Order: Type - ΦD - Color = QTY
PO - Φ16 - Orange =